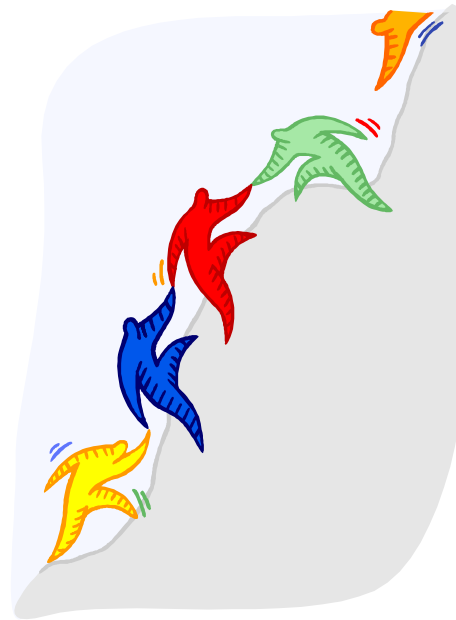


Peer Support

How does Peer Support help other students? Peer Support helps other students in many ways. Some of the ways Peer Support helps others is to pair up with new students, go into classrooms to promote respect, and to talk with 5th grade students about the middle school.

How is the Peer Support Team trained? Students go through basic training for 6 weeks and then meet once a month for advanced training.

How do I become a member of Peer Support? Contact Mrs. Repka about open positions.



Peer Support: Let Us Help You!

Belvidere Central Middle School

**PEER SUPPORT
MRS. REPKA, ADVISOR**

**8787 Beloit Rd
Belvidere, IL 61008
815-544-0190**



PEER SUPPORT
Let us help you!


BCMS

Why Peer Support?

Peer Support is an ongoing program in which students are trained to help other students in several different areas:

-Peer Role Models

-New Students/Peer Buddies

-Anti-Bullying Promotion

-Promoting Respect for all Students



Peer Support can. . .

- ◆ Teach students how to help others.
- ◆ Help new students meet peers in a fun, relaxed atmosphere.
- ◆ Promote mutual understanding of various individuals and groups.
- ◆ Counteract school violence and develop responsible citizens.
- ◆ Talk with incoming 5th graders about the middle school to help with their transition to BCMS.



If you have any questions about our Peer Support Program at BCMS, please contact Mrs. Repka, LPC, NCC, BCMS Counselor, at srepka2@district100.com.